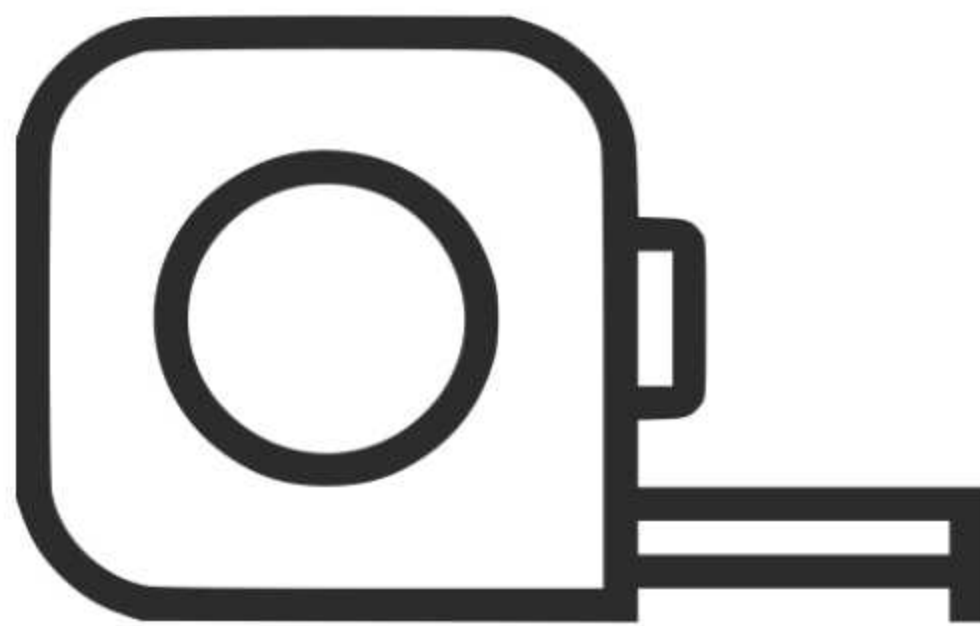


IKD's Quick **Measure** Guide

Tips to easily take
measurements for your IKEA
project



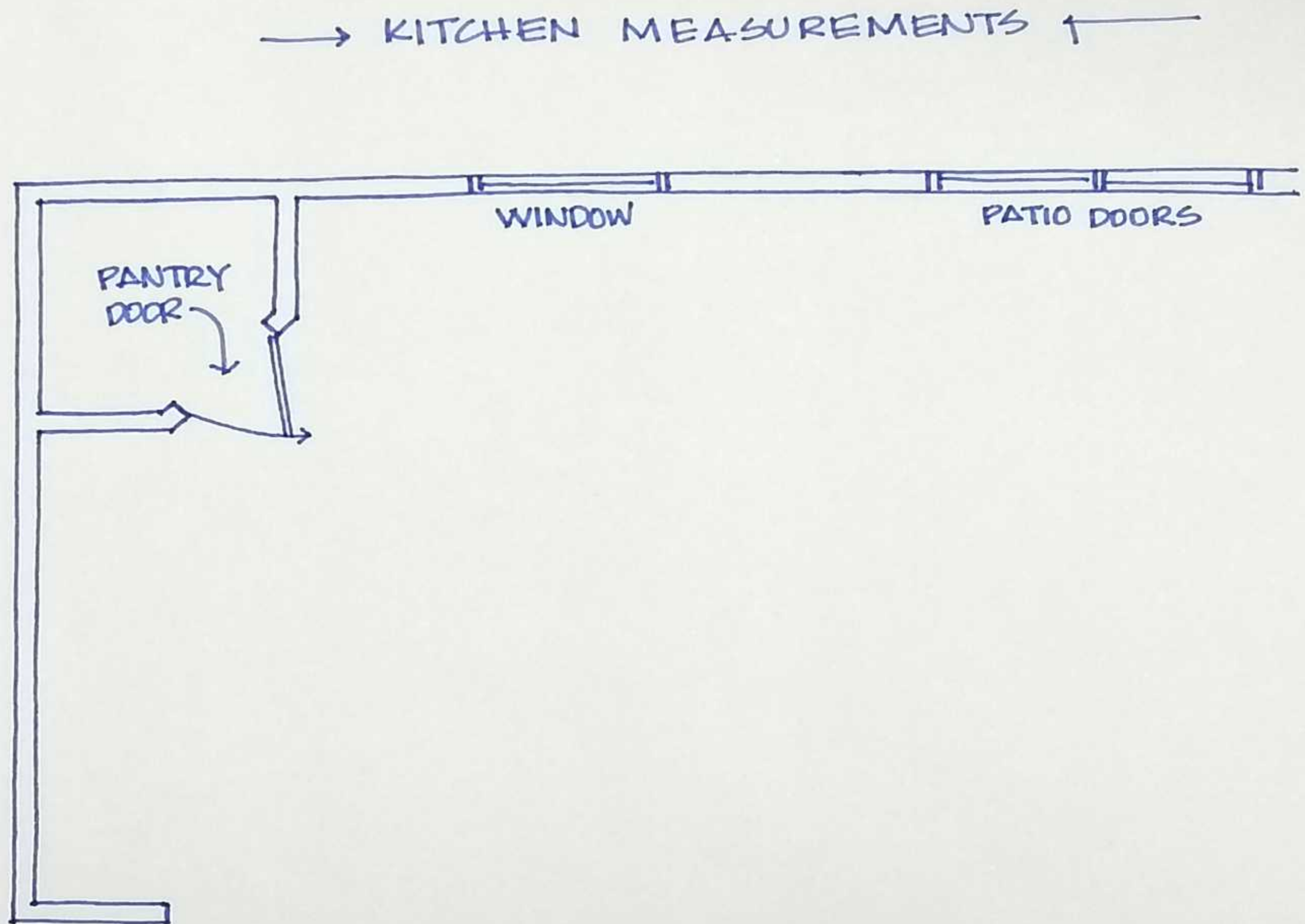
Introduction

To get your IKEA design started we need a simple sketch or floor plan.

Anyone can take their own measurements with a little direction.

This guide will provide useful tips on how to easily take measurements.

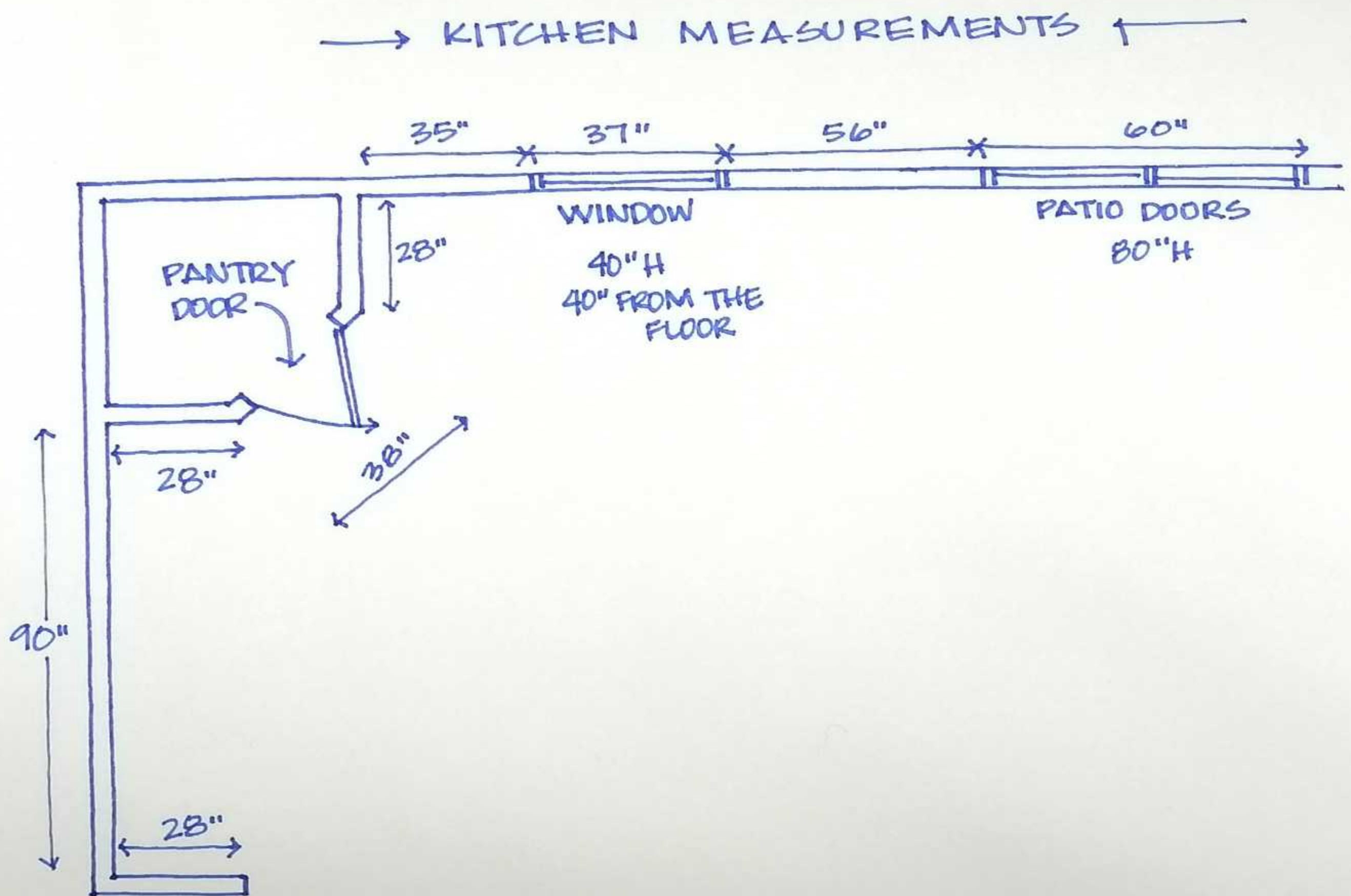
STEP 1: Your kitchen floorplan



Create your floorplan by drawing a rough outline of your space including doors, windows, walkways and any other openings you have in the room. Label each on your floorplan.

Be sure to include any major structural features or obstacles that affect where the cabinets can be installed.

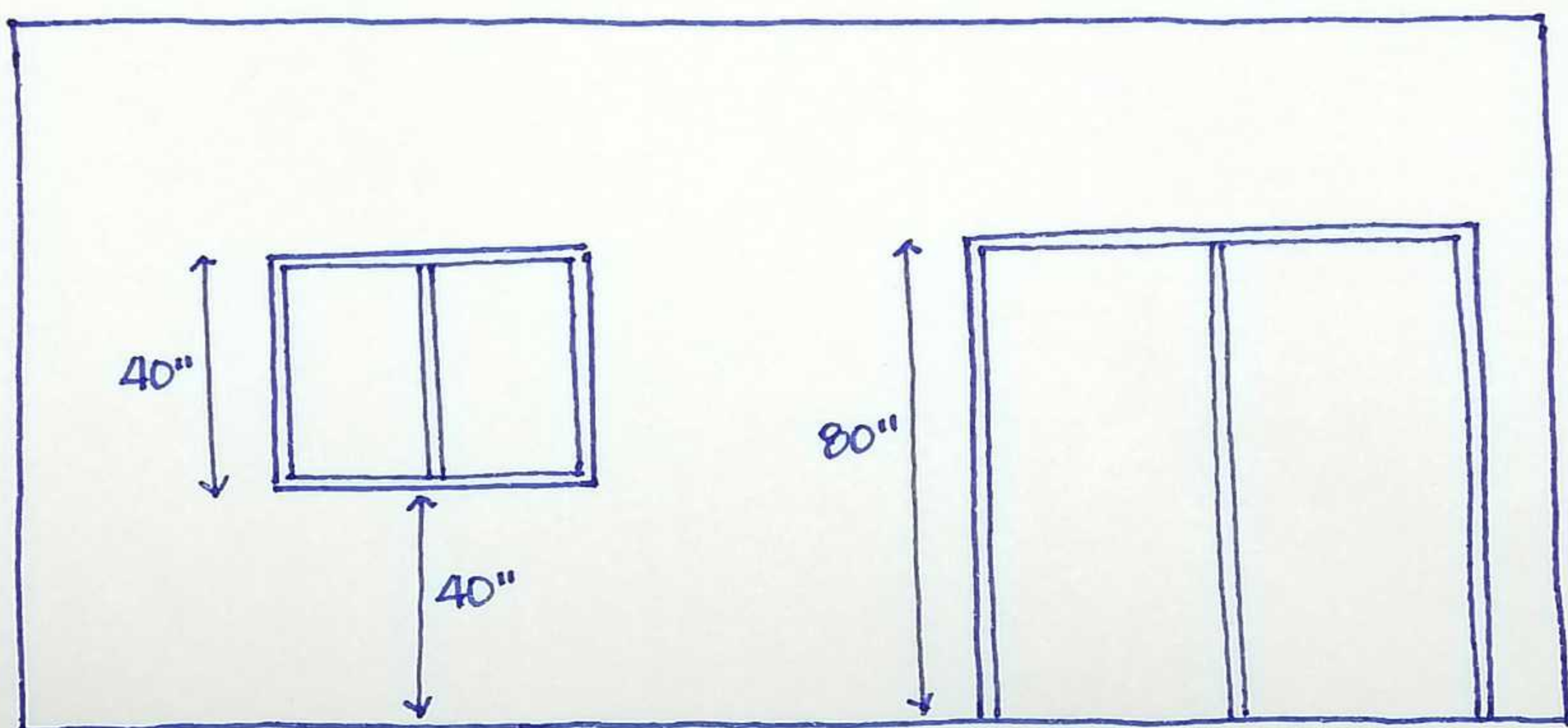
STEP 2: Measure



Measure all the openings from outside edge to outside edge.

Use inches, and measure to the nearest eighth of an inch. Working from left to right, work clockwise measuring the full length of each wall, including all windows and doorways.

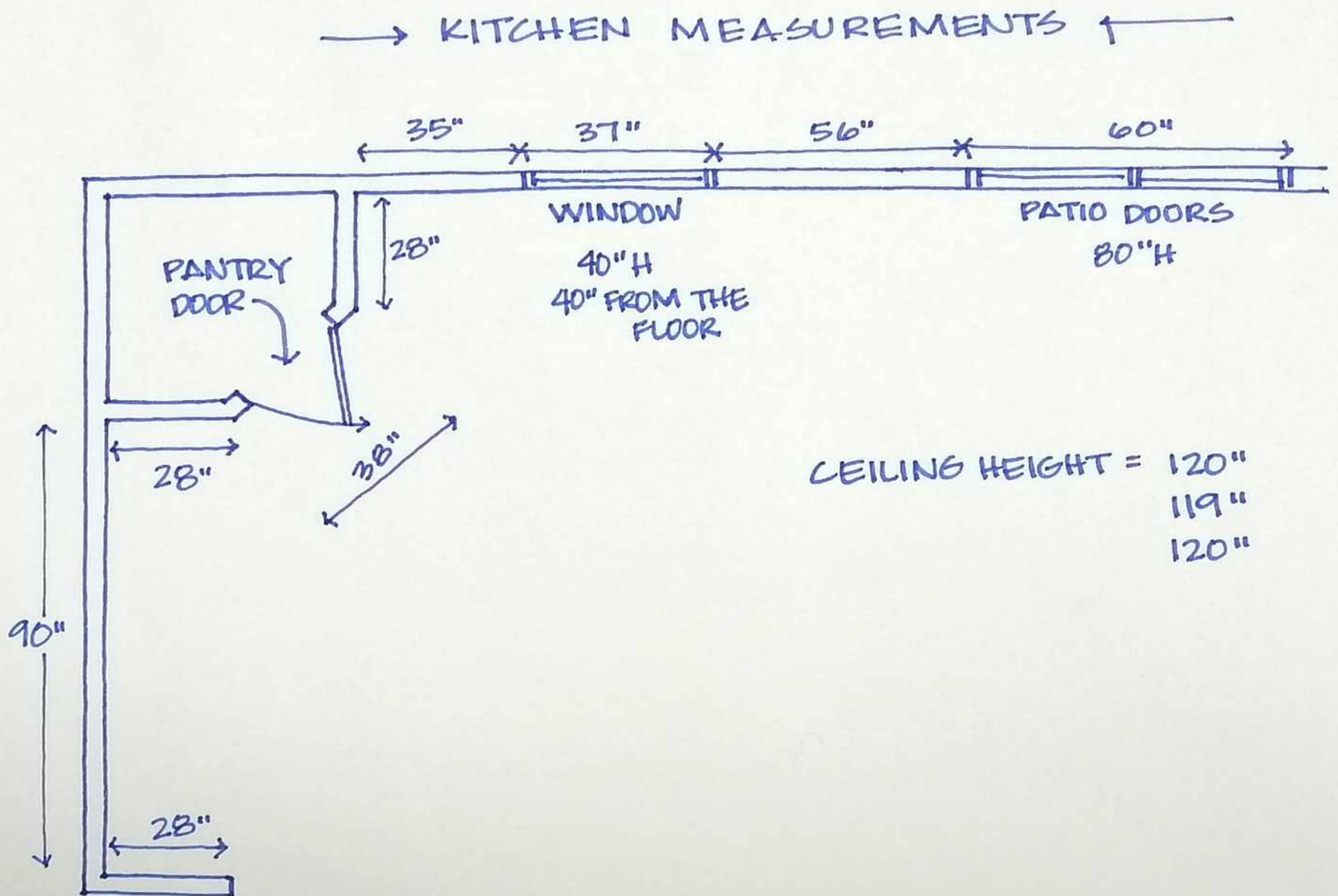
Doors and windows



For doors, doorways and windows make sure to include the trims or casing in the overall measurements that you record.

Heights of the window are also required, you also got to measure from the bottom of the window to the floor.

STEP 3: Ceiling height



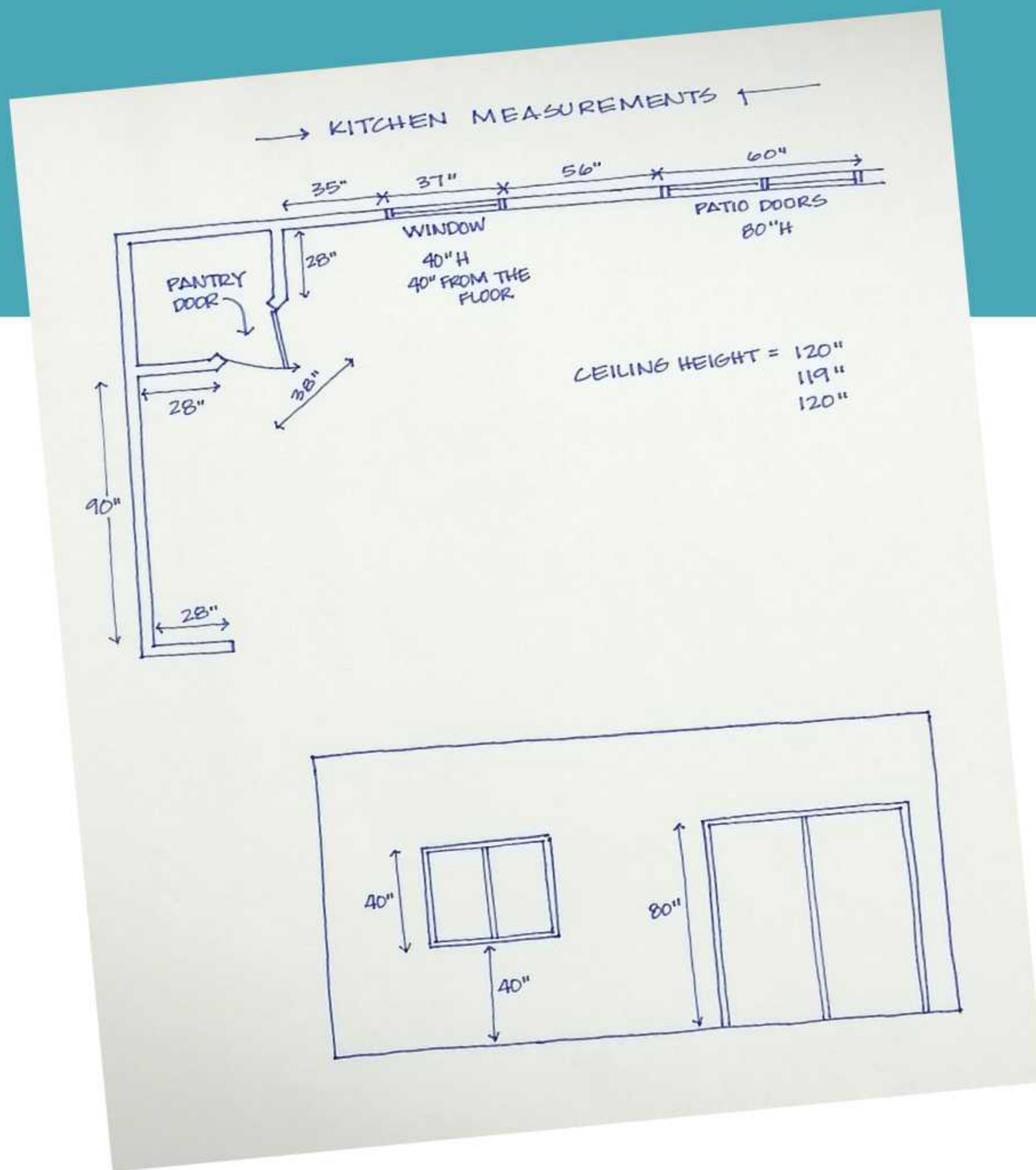
You'll also need to measure the ceiling height. Measure the height at two to three places to compensate for any variations and record these on your floorplan.

STEP 4: Pictures



What really help your designer is to take "before" pictures of your kitchen and send them along with your measurements.

Now all you have to do is take a picture of your measure drawing and upload it to our Design Requisition Form.



Contact info

florence@inspiredkitchendesign.com